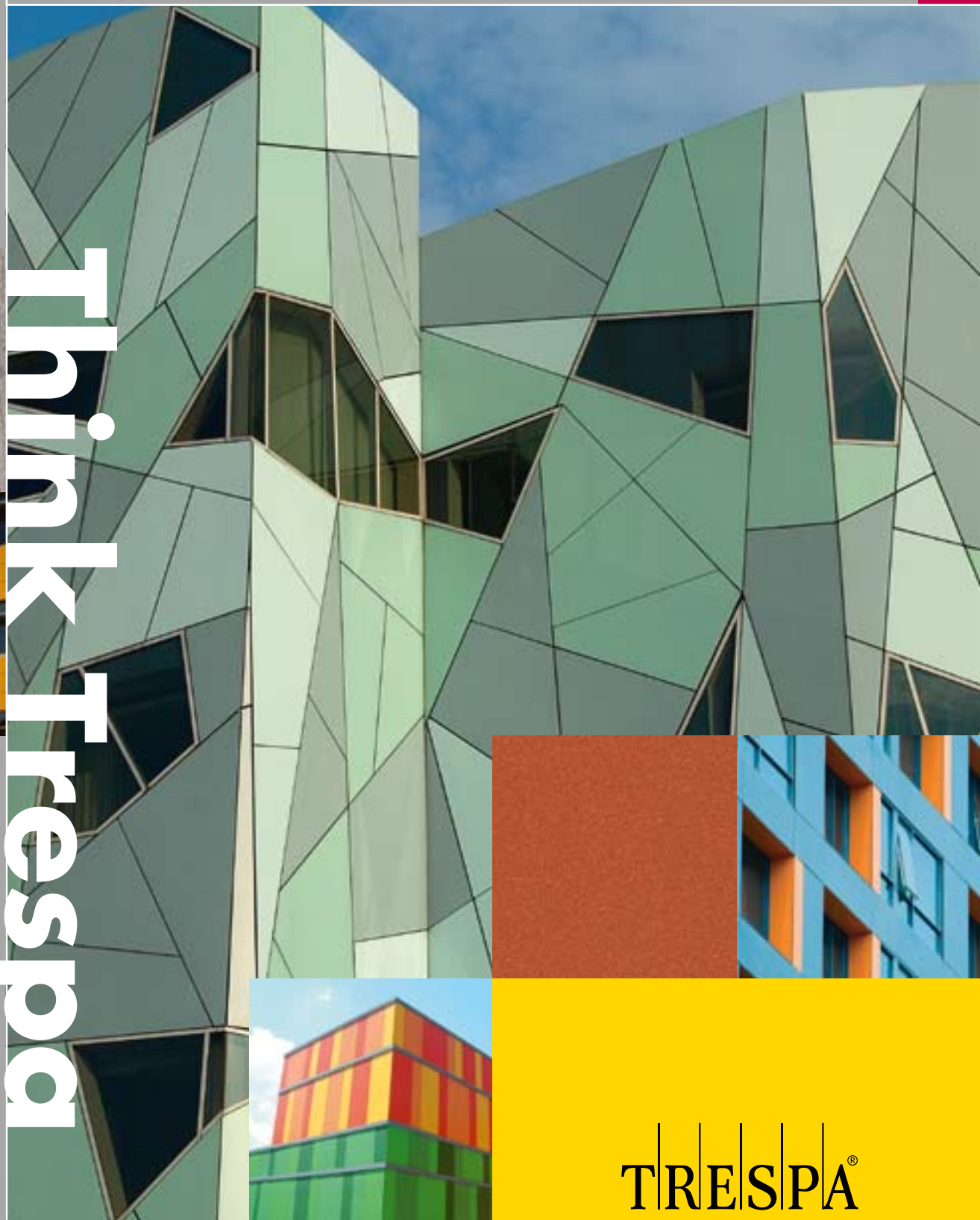


EXTERIOR PANELS

Think Trespa



TRES|PA®



ABOUT TRESPA

Trespa International B.V. is a leading innovator in the field of architectural materials, recognized internationally as the premier developer of HPL panels and related building systems. Founded in 1960 and with headquarters in the Netherlands, Trespa manufactures high-performance Trespa Meteon panels for the worldwide market. Trespa's focus is on product development, combining quality manufacturing technologies with intelligent solutions for architectural applications. Our global sales organization is complemented by a network of local agents and distributors, bringing regional insights to each customer's needs.

See *"The global leader in facade solutions"* on page 14 for more information.

VENTILATED FACADES

Trespa Meteon panels are installed as a component of rainscreen cladding or ventilated facade system. This "breathing" envelope system, employed the world over, can contribute a number of advantages to building designs.

See *"About Ventilated Facades"* on page 13 for more information.

TRESPA METEON - FACADE PANELS THAT INSPIRE, PERFORM AND ENDURE

COLOR

TEXTURE

NATURAL

Created to Inspire

Elements of beauty in the world around us – that’s the spirit behind Trespa Meteon, Trespa’s leading family of architectural panels for facades and exterior applications. With a broad range of colors, finishes and tactile effects, Trespa Meteon brings compelling aesthetic and nearly limitless design possibilities to next-generation architectural claddings.

ROBUST
STABLE
LONG-LASTING

Engineered to Perform

Trespa Meteon is a decorative high-pressure compact laminate (HPL) with an integral surface manufactured using Trespa’s unique in-house technology, Electron Beam Curing (EBC). Engineered for facades and other demanding exterior applications, Trespa Meteon’s underlying technology transforms wood-based fibers with thermosetting resins under high pressure and at high temperatures into striking panels that meet the most exacting specifications.

VIBRANT
VERSATILE
EFFECTIVE

Built to Endure

Developed in the Netherlands and specified by architects worldwide, Trespa Meteon is synonymous with durability and leading-edge design. The panels are robust and adaptable for ventilated facades and other high-performance building applications. Depending on the architectural concept, Trespa Meteon can contribute effectively to energy efficient, healthy building designs with a positive impact on long-term performance and value.



FACADE PANELS THAT INSPIRE

Your vision, in Trespa Meteon

Good design starts with inspiration, exceptional vision and provocative thinking. It comes to life with great materials, finishes and systems. Where concept meets solution, you'll find Trespa Meteon.

Visual appeal

Start with Trespa Meteon's ability to customize panel aesthetics with unique finishes and varied shapes. Enhance it with contrasting materials, articulated fixing and lighting – and more. Start with Trespa Meteon, and end with a remarkable facade. The result: A building that projects innovation, excitement and a decidedly contemporary image.

A world of proof

Great architecture elevates a mere building to a work of art. Trespa Meteon can be found on thousands of celebrated structures worldwide by eminent designers. These works bear testimony to the versatility and visual power of Trespa Meteon.

Trespa Meteon's beauty is more than skin deep – it offers a lasting aesthetic, in materials tested according to stringent codes and standards. So today's vision will remain tomorrow's reality.

When it comes to inspiration and transforming your ideas into lasting, memorable facades, Trespa is the partner of choice.



DESIGN FREEDOM FIRST

Trespa Meeon is an extremely versatile material. The panels can be combined easily with other building materials to create one-of-a-kind effects and highlights. And Trespa Meeon's broad range of classic, modern and trend-setting designs ensures you'll find what you need – even if it's a wholly custom design.

Appearance

Trespa Meeon is available in many standard colors, textures and finishes, including lustrous Metallics. The acclaimed Naturals and Wood Decors collections offer a wide range of wood grains and organic motifs. For variety, panels can be oriented in different directions for distinctive visual effects across a facade. Making custom colors and finishes a reality for practically any project, Trespa offers a low minimum order quantity. Start with Trespa Meeon, for the ultimate in design freedom.

Size

Panels can be produced in a variety of sizes including an exceptionally large 4270 x 2130 mm (±168 x 83 in). Beyond the exciting options it offers for facade grids, this format can also reduce cutting losses and can minimize waste during fabrication.

Shape

Trespa Meeon may be cut and installed in many configurations or profiles. Plus, combining Trespa Meeon with Trespa Curved Elements¹ radiused panels lends facades added depth and character.

Installation

With a dense and homogeneous core, Trespa Meeon panels can be machined similar to high-quality hardwood using standard carpentry tools, leaving crisp, clean edges and uniform openings. Trespa Meeon can be applied in a number of ways, using a number of joinery details and both exposed and concealed fixing². (For information on possible fixing systems in your region, visit www.trespa.info.)

Effect

To achieve even more visual impact, Trespa Meeon can be combined with new technologies such as LED lighting elements¹, and the result is dazzling.

Create rhythm, character and depth. Add color and texture, and play with light and shadow. Use Trespa Meeon alongside other building materials for contrast, harmony and accent. The result is a facade that transforms and enhances, adding new dimensions to any building design.

¹ Availability limited - contact your local Trespa representative for more details.

² Trespa strongly advises that the project owner and/or architect seek(s) independent advice from a design professional regarding application and installation. Although this brochure is composed with reasonable care, please note that this brochure provides general information only and is subject to our disclaimer on the reverse side of this document.



Arch. Michele Seregola, Italy



Arch. Enrica Masciaro, Fusina 6, Spain



Atelier Jean Nouvel, France





MCS Architects, United States of America



Nicolas Burwell Architects, UK



Arch. Henry J. Lyons & Partners, Ireland

FACADE PANELS THAT PERFORM

Assured performance, Trespa Meteon

Today's buildings challenge architects and project teams at every turn. Designers need materials and systems that do more than appeal to the eye: they must meet rigorous codes and standards² while delivering proven installed performance – and good return on investment.

Where concept meets solution, Trespa Meteon delivers.

A wealth of applications

Trespa Meteon stands out in vertical exterior wall coverings such as facade cladding, balcony panelling as well as horizontal exterior ceiling applications.

The dimensionally stable, precisely edged panels lend crisp profiles and sleek, uniform surfaces to any exterior use. Vary joint reveals for limitless options in exterior expression.

Trespa Meteon panels are installed as a component of rain screen cladding or ventilated facade system.

This “breathing” envelope system, employed the world over, can contribute a number of advantages to building designs. (See “About Ventilated Facades,” page 13.)

When designed effectively, key benefits include:

- > Moisture and thermal control.
- > Improved acoustics.
- > Enhanced indoor environmental quality (IEQ).
- > Overall gains in building performance and durability.

Engineered for strength, precision and performance.

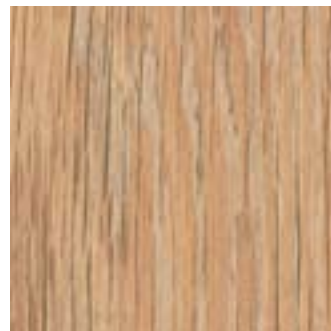
Ideal for today's most effective cladding designs. Start with Trespa Meteon, and end with a high-performance facade.

It begins with the right panel

Trespa Meteon is a high-pressure decorative compact laminate (HPL) with an integral decorative surface technology.

The blend of up to 70% wood-based fibers and thermosetting resins, manufactured under high pressures and temperatures, yields a highly stable, dense panel with exceptional dimensional stability and good strength-to-weight ratios.

The resulting self-supporting, integrally decorative panels are highly resource-efficient and lasting. And by providing a cladding panel ideal for ventilated facades, Trespa Meteon offers significant architectural opportunities: energy efficiency, healthy interiors and a compelling, lasting aesthetic.



PERFORMANCE-DRIVEN SPECS

Trespa Meteon is an engineered and rigorously fabricated panel product that turns wood-based fibers and resin into a highly resistant, dimensionally stable building material. The resulting high-pressure laminate (HPL) has a homogenous core and is available in several thicknesses between 6¹ mm (± ¼ in) and 13 mm (± ½ in). Please check www.trespa.info for the available thicknesses in your region.

Solid and sturdy

Consistent and high-density throughout, Trespa Meteon holds bolts, screws and other mechanical fixings solidly. The panels have good compressive and tensile strength and excellent pullout and impact resistance, yet Trespa Meteon is easily machinable and workable.

Safe and secure

Trespa is committed to the safety of its processes and products. Two classes of Trespa Meteon are available: Standard¹ grade and enhanced Fire-Retardant grade (FR). Trespa Meteon's standard delivery program complies with European Standard EN 438-6 and has been accepted for the European Economic Area (EEA) mandatory CE mark according to the EN 438-7. Trespa Meteon meets stringent regulations for consumer safety, health and environmental issues in many markets around the world, certified by such institutes as KOMO, DIBt, BUTgb, BBA, CSTB, Torroja and UL.

Weather resistant and color stable

Trespa Meteon panels perform outdoors exceptionally well. Sun and rain will have no significant effect on the panel's surface. Trespa Meteon is practically impervious to acid rain as well. Accelerated weathering tests are the best measure of performance, and recent trials continue to rank Trespa Meteon's decorative surface at high classifications for UV-resistance and color stability.

Standing behind Trespa Meteon's outstanding results in weathering is Trespa's in-house expert center, a group highly specialized in weatherability performance, amongst other areas. Actual performance of Trespa Meteon panels depends

on local climate and building circumstances, of course – but its baseline is superlative.

To guarantee the availability of the latest updated product information, the Material Property Datasheet is available at www.trespa.info.

Low maintenance

Trespa Meteon panels are robust and nonreactive, so no coatings or protective cover is required for exposed surfaces or machined edges. Its closed, pore-free surfaces of dense HPL practically eliminate dirt accumulation, keeping Trespa Meteon smooth and easy to clean. Nonabrasive household cleaning agents – even strong organic solvents – can be used in accordance with Trespa's approved cleaning methods. (For instructions, visit www.trespa.com.)

The unique properties of Trespa Meteon panels make them highly durable with a long life of retained appearance. That's why the Trespa Meteon range is backed by a 10-year product warranty. (For details on product warranty conditions, contact your local Trespa representative or visit www.trespa.com.)

¹ Availability limited - contact your local Trespa representative for more details.

² Trespa strongly advises that the project owner and/or architect seek(s) independent advice from a design professional regarding application and installation. Although this brochure is composed with reasonable care, please note that this brochure provides general information only and is subject to our disclaimer on the reverse side of this document.



FACADE PANELS THAT ENDURE

Enlightened choice, Trespa Meteon

The first word in sustainable design is durability. Make it work, and make it last.

When it comes to long product life, Trespa Meteon delivers. And Trespa stands behind your choice with environmental credentials and a mission to support the green building movement. Our ISO 14001 accreditation for Environmental Management Systems sets us apart: it means Trespa has created, implemented and continually improves a fully developed system assuring environmental standards are met. Every day.

Trespa developed Trespa Meteon to meet our vision – and the project team’s vision – of an ecologically advanced future.

Material

Start with the material itself: Impact-resistant Trespa Meteon panels boast a dimensional stability comparable to hardwood. Properly installed, Trespa Meteon resists moisture, freeze-thaw cycles, mold and rot as well as termites and microbial attack. A homogenous, high-density core makes Trespa Meteon extremely robust – most colors meet the highest classifications for European Standard EN 438-6, ASTM D-2244 and other major codes. Under typical conditions, the material lasts for many years with negligible performance loss.





Building system

Then consider the building system: As a champion of ventilated facade construction, Trespa is on the forefront of cutting-edge building techniques. Ventilating facades are more than a design gesture – they’re a proven way to create energy efficient, long-lasting properties. In industry studies, ventilated facade systems are shown to reduce energy needs and improve interior environments to benefit occupant health.

Many of these advantages also contribute to green building certifications. For more information on ventilated facades, please visit www.trespa.com.

Life of the building

Last, consider the life of the building: Because Trespa Meteor is so durable, fewer products need to be applied during the building’s years of use. Trespa Meteor’s exceptionally large panel size even further reduces cutting losses and embodied energy from fabrication. Waste from Trespa panels can be incinerated in properly controlled industrial installations – a technique used at the Trespa production site. Replacing and repairing rain screen Trespa Meteor panels is relatively easy, too. At end of life, Trespa Meteor installed with mechanical fixings can be demounted and reused.

Overcladding

Trespa Meteor is ideal for overcladding and renovating older buildings, often adding an extra insulation layer in the process and without need for structural or foundation reinforcement². This can reduce construction budgets while recycling existing structures and materials and conserving demolition energy.

A more promising future starts with a ventilated facade using Trespa Meteor – rugged and attractive, safe and low-maintenance, energy efficient and eco-effective.

² *Trespa strongly advises that the project owner and/or architect seek(s) independent advice from a design professional regarding application and installation. Although this brochure is composed with reasonable care, please note that this brochure provides general information only and is subject to our disclaimer on the reverse side of this document.*



Kasser and Gory Architects, United States of America

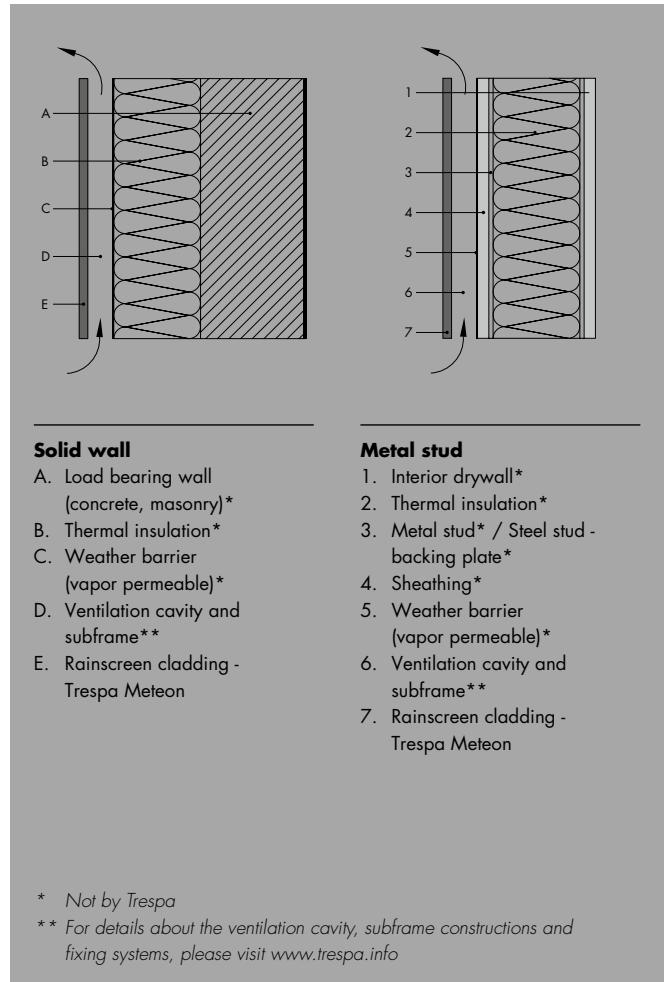


ABOUT VENTILATED FACADES

For facade applications, Trespa Meteon is used only as rainscreen, also known as ventilated facade, a building solution with both technical and aesthetic benefits. Ventilated facade systems entail the fixing of panels on a substructure, which is fixed to the structural facade. Joints between panels can remain open. The cavity between the rainscreen cladding and the insulation or construction allows for ventilation to flow through from the ventilation inlets and outlets.

These assemblies result in a variety of advantages. First, a chimney effect draws air through the cavity, aiding in the removal of heat and moisture from rain or condensation. Second, the rainscreen blocks some solar gain and accommodates continuous insulation, considerably reducing air-conditioning. Third, these results are shown to improve comfort within occupied zones.

Considered fast to assemble and requiring no wet trades, ventilated facade systems have gained prominence amongst architects, building owners and code officials. An increasing number of projects around the world have used this technique for new constructions, refurbishments, renovations and conservation purposes. For new buildings, rainscreen offers excellent design flexibility, technical advantage, and aesthetic range.



HOK Architects, United States of America



THE GLOBAL LEADER IN FACADE SOLUTIONS

Trespa International B.V. is a leading global producer of innovative and inspirational facade solutions, turning architectural ideas into lasting reality. With headquarters in the Netherlands, Trespa manufactures high-performance Trespa Meteon panels for construction markets around the world.

Since its founding in 1960, Trespa has worked closely with architects, designers, installers, distributors and end users globally. With unique insights into key market challenges and demands, Trespa has applied passion and energy to delivering innovative, aesthetically pleasing and high-performance solutions for a wide range of architectural needs.

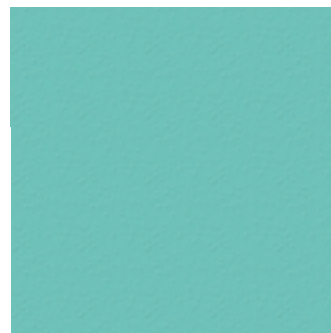
Trespa strives to set a new standard in facade solutions. Focusing on product and application development, Trespa creates exceptionally durable and attractive products. Its premier product line is Trespa Meteon, produced with

integrated decorative surfaces. As with all Trespa products, Trespa Meteon has been tested to and meets various codes and regulations for safety, quality and environmental standards.

A tradition of quality and service

Trespa International believes that success depends on quality, whether in manufacturing processes, high-performance product development or customer applications. The company has a global sales organization complemented by a network of local agents and distributors, bringing Trespa closer to the commercial perspective of its end users in regional building markets.

Every facade project is different, but the fundamental values Trespa holds remain the same: to listen to our customers, to care for our environment and people, and to set a new standard in architectural facade solutions.





DISCLAIMER

General

These terms apply to the use of this document and such use automatically means that the other party agrees to these terms. The information provided by Trespa International B.V. ("Trespa") in this document is solely indicative. Trespa is unable to warrant the accuracy and completeness of this information. Trespa may change the information included in this document at any time and without further notice. Trespa's customers and third parties must ascertain that they have the most recent document (for the most recent version, please consult: www.trespa.com). No rights can be derived from the information provided; the use of the information is at the other party's risk and responsibility.

Trespa does not warrant that the information in this document is suitable for the purpose for which it is consulted by the other party. This document does not contain any design, structural calculation, estimate or other warranty or representation that customers and third parties may rely on. This document does not guarantee any properties of Trespa products. Colors used in Trespa's communications (including but not limited to printed matter) and in samples of Trespa's products may differ from the colors of the Trespa products to be supplied. Samples are not intended for use in product tests

and are not representative of characteristics of the Trespa products. Trespa's products and samples are produced within the specified color tolerances and the colors (of production batches) may differ, even if the same color is used. The viewing angle also influences the color perception. Metallics panels feature a surface whose color appears to change based on the direction from which it is viewed. The specified color stability and color specifications relate only to the decorative surface of the Trespa products, not to the core material and samples of the Trespa products. Trespa products are delivered ex-works with straight, sawn sides.

Customers and third parties must have a professional adviser inform them about (the suitability of) the Trespa products for all desired applications and about applicable laws and regulations. Trespa does not warrant the above.

The most recent version of the current delivery program and the Material Properties Datasheet can be found at www.trespa.info. Only the information in the most recent and valid Material Properties Datasheet should be used to select and provide advice regarding Trespa products. Trespa reserves the right to change (the specifications for) its products without prior notice.

Liability

Trespa is not liable (neither contractual nor non-contractual) for any damage arising from or related to the use of this document, except if and to the extent that such damage is the result of willful misconduct or gross negligence on the part of Trespa and/or its management. The limitation of liability applies to all parties affiliated with Trespa, including but not limited to its officers, directors, employees, affiliated enterprises, suppliers, distributors, agents, and representatives.

General conditions

All oral and written statements, offers, quotations, sales, supplies, deliveries and/or agreements and all related activities of Trespa are governed by the Trespa General Terms and Conditions of Sale (*Algemene verkoopvoorwaarden Trespa International B.V.*) filed with the Chamber of Commerce and Industry for Noord- en Midden-Limburg in Venlo (NL) on 11 April 2007 under number 24270677, which can be found on and downloaded from the Trespa website, www.trespa.com. All oral and written statements, offers, quotations, sales, supplies, deliveries and/or agreements and all related work of Trespa North America, Ltd. are governed by the Trespa General Terms and Conditions of Sale, which can be found on and downloaded from the Trespa North

America Ltd. website, www.trespa.com/na. A copy of these general conditions of sale will be provided free of charge on request.

All general terms and conditions other than the conditions mentioned above are dismissed and do not apply, regardless of whether such terms and conditions are referred to on requests for offers, offer confirmations, stationery and/or other documents of the other party, even if Trespa does not expressly object to such terms and conditions.

Intellectual property

All intellectual property rights and other rights regarding the content of this document (including logos, text and photographs) are owned by Trespa and/or its licensors. Any use of the content of this document, including distribution, reproduction, disclosure, storage in an automated data file or the dispatch of such a file without Trespa's prior written consent is explicitly prohibited. ® Trespa, Meteon, Athlon, TopLab, TopLab^{PLUS}, TopLab^{ECCO-FIBRE}, Virtuo, Volkern, Trespa Essentials and Mystic Metallics are registered trademarks of Trespa.

Questions

Should you have any questions or comments, please do not hesitate to contact Trespa.

www.trespa.com

VISIT US

CONTACT US

Trespa International B.V.

P.O. Box 110, 6000 AC Weert
Wetering 20, 6002 SM Weert
The Netherlands
www.trespa.com

Customer Service Desk EMEA Export

Tel.: +31 (0) 495 458 359 / 573
Fax: +31 (0) 495 458 383
infoexport@trespa.com

Trespa North America Ltd.

12267 Crosthwaite Circle
Poway, CA 92064
United States of America
Tel.: 1-800-487-3772
Fax: 1-858-679-9568
info.northamerica@trespa.com

Trespa China Co. Ltd.

Room 2604-05, HuaiHai Plaza
No. 1045 HuaiHai Road (central)
ShangHai 200031
P.R. China
Tel.: +86 (0) 21 6288 1299
Fax: +86 (0) 21 6288 1296
infochina@trespa.com

Customer Service Desk Asia/ Pacific

Tel.: +86 (0) 21 5465 8388
Fax: +86 (0) 21 5465 6989
infoapac@trespa.com

Trespa UK Ltd.

Grosvenor House
Hollinswood Road
Central Park, Telford
Shropshire, TF2 9TW
United Kingdom
Tel.: +44 (0) 1952 290707
Fax: +44 (0) 1952 290101
info@trespa.co.uk

Trespa Singapore Pte Ltd.

3 Raffles Place
#07-00 Bharat Building
Singapore 048617
Tel.: +65 6329 9783
Fax: +65 6329 9699
infoapac@trespa.com

Trespa Design Centre

62 Greene Street (Ground Floor)
New York, NY 10012
United States of America
Tel.: 1-212-334-6888
Fax.: 1-866-298-3499
info.ny@trespa.com
www.trespa-ny.com



William Kite Architects,
United States of America

Projects on cover:
Arch. Vista Pte Ltd, Singapore
Arch. Stuckey Construction,
United States of America
Arch. Chapman Taylor, Spain
Arch. Kwan Henmi Architecture,
United States of America

Your Trespa representative :

code V2451 version 3.0
date 06-2010 copies 3.000
TOM1-code-411023 / V9520

Please visit www.trespa.com
for the most up to date version
of this document.



COLOUR COLLECTION
EXTERIOR PANELS

METEON

Metallics

- Single sided
- Double sided
- Vantop

	Satin	Rock	Gloss
M 21.3.4 Azurite Blue	■	■	■
M 18.7.2 Amethyst	■	■	■
M 21.8.1 Graphite Grey	■	■	■
M 35.7.1 Malachite Green	■	■	■
M 51.0.2 Urban Grey	■	■	■
M 51.0.1 Aluminium Grey	■	■	■
M 12.4.2 Garnet Red	■	■	■
M 53.0.1 Copper Red	■	■	■
M 53.0.2 Copper Yellow	■	■	■
M 40.4.3 Mustard Yellow	■	■	■
M 06.4.1 Amber	■	■	■
M 05.5.1 Titanium Bronze	■	■	■
M 04.4.1 Titanium Silver	■	■	■
CM 26.4.2 Mystic Green	■	■	■
CM 22.4.1 Mystic Silver	■	■	■

Wood Decors

- Single sided
- Double sided
- Vantop

	Satin	Rock	Gloss
NW01 Loft Grey	■	■	■
NW02 Elegant Oak	■	■	■
NW03 Harmony Oak	■	■	■
NW04 Pacific Board	■	■	■
NW05 Loft Brown	■	■	■
NW06 Montreux Amber	■	■	■
NW07 Montreux Sunflow	■	■	■
NW08 Italian Walnut	■	■	■
NW09 Wenge	■	■	■
NW10 English Cherry	■	■	■
NW11 Santos Palisander	■	■	■
NW12 Natural Bagenda	■	■	■
NW13 Country Wood	■	■	■
NW14 French Walnut	■	■	■
NW15 Milano Sabbia	■	■	■
NW16 Milano Terra	■	■	■
NW17 Milano Grigio	■	■	■

Naturals

- Single sided
- Double sided
- Vantop

	Satin	Rock	Gloss
NA05 Erosion	■	■	■
NA06 Patina	■	■	■
NA07 Deep Blue	■	■	■
NA08 Sierra Red	■	■	■
NA09 Oxidation	■	■	■
NA10 Titanic	■	■	■

Uni colours

	Satin	Rock	Gloss
A 20.5.2 Lavender Blue	■	■	■
A 22.6.2 Dark Denim	■	■	■
A 20.7.2 Dark Blue	■	■	■
A 90.0.0 Black	■	■	■
A 25.8.1 Anthracite Grey	■	■	■
A 25.7.1 Iron Grey	■	■	■
A 21.5.1 Mid Grey	■	■	■
A 10.6.1 Taupe	■	■	■
A 10.3.2 Old Rose	■	■	■
A 08.2.3 Salmon	■	■	■
A 10.3.4 Terra Cotta	■	■	■

Naturals

- Single sided
- Double sided
- Vantop

	Satin	Rock	Gloss
A 11.4.4 English Red	■	■	■
A 10.4.5 Sienna Brown	■	■	■
A 09.6.4 Mahogany Red	■	■	■
A 08.4.5 Rusty Red	■	■	■
A 12.6.3 Wine Red	■	■	■
A 14.7.2 Deep Red Brown	■	■	■
A 08.8.1 Dark Brown	■	■	■
A 34.8.1 Forest Green	■	■	■
A 32.7.2 Dark Green	■	■	■
A 33.3.6 Brilliant Green	■	■	■
A 36.3.5 Turf Green	■	■	■
A 40.5.1 Moss Green	■	■	■
A 37.2.3 Spring Green	■	■	■
A 36.4.1 Agave Green	■	■	■
A 28.6.2 Mid Green	■	■	■
A 26.5.4 Pacific	■	■	■
A 22.6.3 Midnight Blue	■	■	■
A 21.5.4 Cobalt Blue	■	■	■
A 22.4.4 Brilliant Blue	■	■	■

Naturals

- Single sided
- Double sided
- Vantop

	Satin	Rock	Gloss
A 24.4.1 Steel Blue	■	■	■
A 28.2.1 Aquamarine	■	■	■
A 30.3.2 Verdigris	■	■	■
A 32.2.1 Translucent Green	■	■	■
A 03.4.0 Silver Grey	■	■	■
A 03.1.0 Pastel Grey	■	■	■
A 21.1.0 Winter Grey	■	■	■
A 22.2.1 Bluish Grey	■	■	■
A 22.3.1 Ocean Grey	■	■	■
A 16.5.1 Mauve	■	■	■
A 13.3.1 Heather	■	■	■
A 08.3.1 Stone Grey	■	■	■
A 08.2.1 Mid Beige	■	■	■
A 05.1.1 Stone Beige	■	■	■
A 05.0.0 Pure White	■	■	■
A 03.0.0 White	■	■	■
A 05.1.0 Papyrus White	■	■	■
A 04.0.0 Cream White	■	■	■
A 04.0.1 Pearl Yellow	■	■	■

Naturals

- Single sided
- Double sided
- Vantop

	Satin	Rock	Gloss
A 04.0.2 Pale Yellow	■	■	■
A 07.1.1 Sand	■	■	■
A 05.1.2 Champagne	■	■	■
A 05.1.4 Sun Yellow	■	■	■
A 04.1.7 Gold Yellow	■	■	■
A 06.3.5 Ochre	■	■	■
A 10.1.8 Red Orange	■	■	■
A 12.3.7 Carmine Red	■	■	■
A 17.3.5 Cyclam	■	■	■
A 18.3.5 Plum Blue	■	■	■
A 20.2.3 Light Viola	■	■	■
A 23.0.4 Mineral Blue	■	■	■
A 30.2.3 Brilliant Turquoise	■	■	■

COLOUR YOUR IMAGINATION

Trespa Meteon architectural panels are available in a wide choice of standard colours and effects. To create façades that are even more individual and expressive, Trespa Meteon Panels can be custom-made in special project colours.

Project colours

TRESPA METEON

Panel size:

- 4270 x 2130 mm (± 168 x 83 in)
- 3650 x 1860 mm (± 143 x 73 in)
- 2550 x 1860 mm (± 100 x 73 in)
- 3050 x 1530 mm (± 120 x 60 in)

Panel thickness:

- 6 mm (± 1/4 in)
- 8 mm (± 5/16 in)
- 10 mm (± 3/8 in)
- 13 mm (± 1/2 in)

Panel type:

- Single sided: decorative side with non-decorative black reverse
- Double sided decorative
- Vantop: decorative side with standard white decorative Satin reverse (A 03.0.0)

Please check www.trespa.info for the detailed and up to date Delivery Program and Material Property Datasheet.

TRESPA

code 1260 version 3.0 date 06-2010 copies 54,000

Projects on cover:
Abbinck & De Haas Architectures, The Netherlands
Van Aerschoot Architectuurbureau, Belgium
Arch. Altor Gurtubay, Astier Aburra & Unai Zelaeta, Spain
Chapman Taylor, Spain





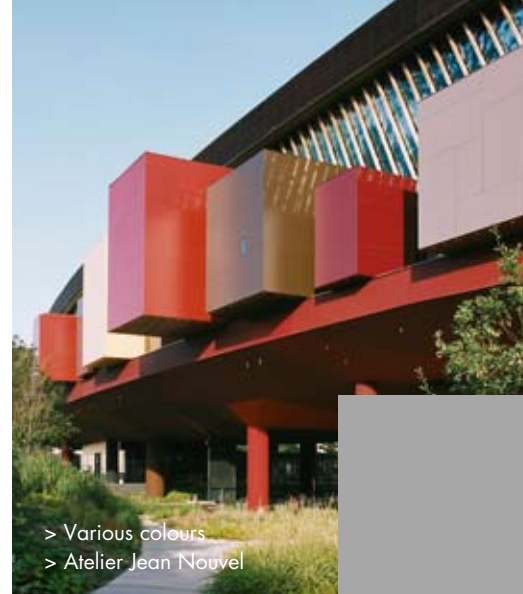
> A24.4.1 Satin,
A28.2.1 Gloss,
M51.0.1 Satin
> Arch. Vista Pte Ltd



> NW02 Satin, NW03 Satin, NW08 Satin
> Arch. Enrica Masciaro, Fusina 6



> Project colour
> Arch. HOK



> Various colours
> Atelier Jean Nouvel



> A12.3.7 Satin
> Arch. Aljoša Dekleva,
Dean Lah, Milan Tomac,
Anže Zalaznik



> A34.B.1 Gloss
> Arch. Max van Aerscht

Think Trespo



> M51.0.1 Rock
> Arch. Enrico Massagrande



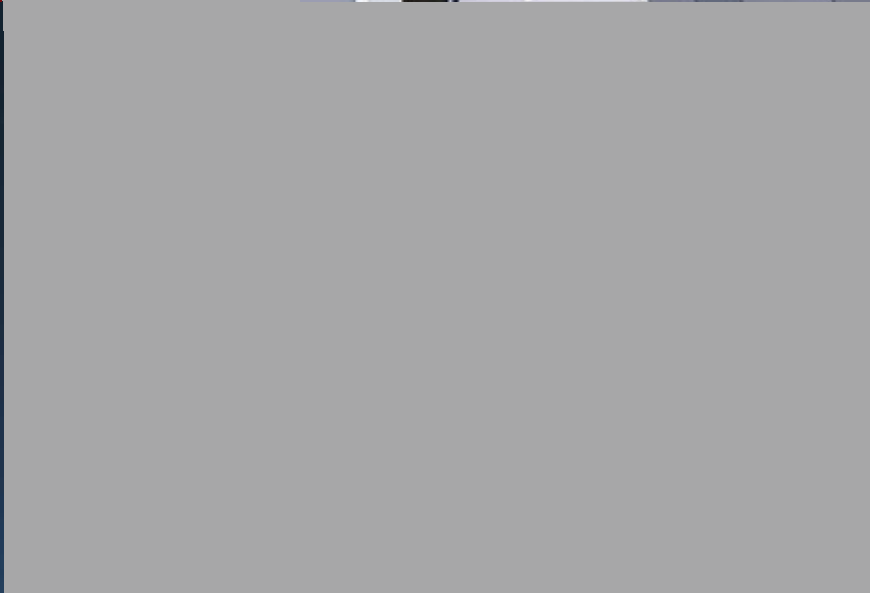
> A37.2.3, A32.7.2 and project colours
> Arch. Mr. Peter West, Studio Egret West



> A25.B.1 Gloss
> Arch. Henry J Lyons & Partners



> Various colours
> Arch. Liu Jihao



> A21.B.1 Satin / Gloss, A03.4.0 Satin, A21.5.1 Satin
> Kasser + Gbry Architects



> NW01 Satin
> Arch. Michela Siregola



> Various colours
> CJS Architects



> A 20.7.2 Rock
> Architectenburo
Zijderhand



> A 90.0.0 Gloss
> Arch. Kai Stama

ENGLISH - Disclaimer:
This document is part of other Trespo means of communication. The disclaimer that follows is a summary of the applicable full disclaimer. The information provided by Trespo International B.V. ("Trespo") in this document is solely indicative. Trespo is unable to warrant the accuracy and completeness of this information. No rights can be derived from the information provided; the use of the information is at the other party's risk and responsibility. Colours used in Trespo's communications (including but not limited to printed matter) and in samples of Trespo's products may differ from the colours of the Trespo products to be supplied. Trespo's products and samples are produced within the specified colour tolerances and the colours (of production batches) may differ, even if the same colour is used. The viewing angle also influences the colour perception. Metallic panels feature a surface whose colour appears to change based on the direction from which it is viewed. The specified colour stability and colour specifications relate only to the decorative surface of the Trespo products, not to the core material and samples of the Trespo products. Customers and third parties must have a professional adviser inform them about the suitability of the Trespo products for all desired applications and about applicable laws and regulations. Trespo is not liable (either contractual nor non-contractual) for any damage arising from or related to the use of this document, except if and to the extent that such damage is the result of willful misconduct or gross negligence on the part of Trespo and/or its management. All intellectual property rights and other rights regarding the content of this document (including logos, text and photographs) are owned by Trespo and/or its licensors. © Trespo, Meteon, Athlon, TopLab, TopLab^{©2016}, TopLab^{©2018}, Virtuo, Volkern, Trespo Essentials and Mystic Metallics are registered trademarks of Trespo.

NEBERLANDS - Disclaimer:
Dit document maakt onderdeel uit van een ander Trespo communicatiemiddel. De navolgende disclaimer is een verkorte weergave van de toepasselijke volledige disclaimer. De door Trespo International B.V. ("Trespo") in dit document verstrekte informatie is louter indicatief. Trespo kan de juistheid en volledigheid van deze informatie niet garanderen. Aan de verstrekte informatie kunnen geen rechten worden ontleend en het gebruik daarvan gebeurt uitsluitend op eigen risico en verantwoordelijkheid. Kleuren in Trespo's communicatiemiddelen (vooralender, maar niet beperkt tot) drukwerk) van monsters van Trespo's producten kunnen afwijken van de kleuren van de te leveren Trespo-producten. Trespo's producten en monsters worden geproduceerd binnen de opgegeven kleurtoleranties en de kleuren (van productiepartijen) kunnen onderling afwijken, zelfs indien dezelfde kleur wordt toegepast. Ook de kijkhoek beïnvloedt de kleurwaarneming. Meteon metalli: platen hebben een richtingsgebonden gekleurd oppervlak. De genoemde kleurtoleranties en kleurspecificaties hebben uitsluitend betrekking op het decoratieve oppervlak van Trespo's producten, en niet op het kerneuateriaal en monsters van Trespo's producten. Klanten en derden dienen zich door een professionele adviseur te laten adviseren over (de geschiktheid van) Trespo's producten voor de gewenste toepassingen en over de toepasselijke wet- en regelgeving. Trespo is niet aansprakelijk (noch contractueel noch buitencontractueel) voor enige schade voortvloeiende uit of verband houdende met het gebruik van dit document, behalve indien en voorzover zulke schade het gevolg is van opzet of bewuste roekeloosheid zijdens Trespo en/of haar bedrijfsleiding. Alle intellectuele eigendomsrechten en overige rechten met betrekking tot de inhoud van dit document (met inbegrip van, doch niet beperkt tot, logo's, tekst en foto's) behoren toe aan Trespo en/of haar licentiegevers. © Trespo, Meteon, Athlon, TopLab, TopLab^{©2016}, TopLab^{©2018}, Virtuo, Volkern, Trespo Essentials en Mystic Metallics zijn geregistreerde handelsmerken van Trespo.

DEUTSCH - Haftungsausschluss:
Dieses Dokument ist Teil anderer Trespo Kommunikationsmittel. Der folgende Haftungsausschluss ist eine Zusammenfassung des geltenden vollen Haftungsausschlusses. Die von der Trespo International B.V. ("Trespo") in diesem Dokument enthaltenen Informationen sind unverbindlich. Trespo übernimmt keine Gewähr für die Richtigkeit und Vollständigkeit dieser Informationen. Die erhaltenen Informationen begründen keine Rechte und deren Nutzung erfolgt auf eigene Gefahr und in eigener Verantwortung. Farben in Unterlagen von Trespo (einschließlich, aber nicht beschränkt auf Druckarbeiten) und von Mustern von Trespo Produkten weichen möglicherweise von den Farben der zu liefernden Trespo Produkte ab. Trespo Produkte und Muster werden nach den angegebenen Farbtoleranzen hergestellt und können sogar bei Verwendung derselben Farben (von Produktionsserien) untereinander Abweichungen aufweisen. Auch der Betrachtungswinkel beeinflusst die Farbwahrnehmung. Die Oberflächenfarbe von Metallics Platten wird je nach Betrachtungswinkel unterschiedlich wahrgenommen. Angaben zur Farbstabilität sowie Farbangaben beziehen sich ausschließlich auf die Dekorbefläche von Trespo Produkten und nicht auf das Kernmaterial oder auf Muster von Trespo Produkten. Kunden und Dritte müssen sich von einem professionellen Berater über die (Geeignetheit der) Trespo Produkte und deren Tauglichkeit für alle beabsichtigten Anwendungen sowie über die geltenden Gesetze und Rechtsvorschriften informieren lassen. Trespo haftet nicht für Schäden infolge von oder im Zusammenhang mit der Nutzung dieses Dokuments. Die vorgenannten Haftungsbegrenzungen gelten nicht, wenn der Schaden auf Vorsatz oder grobe Fahrlässigkeit von Trespo Managemente zurückzuführen ist. Alle geistigen Eigentumsrechte und sonstigen Rechte am Inhalt dieses Dokuments - darunter auch Logos, Text und Bildmaterial - stehen Trespo und/oder ihren Lizenzgebern zu. © Trespo, Meteon, Athlon, TopLab, TopLab^{©2016}, TopLab^{©2018}, Virtuo, Volkern, Trespo Essentials und Mystic Metallics sind eingetragene Markenzeichen von Trespo.

FRANÇAIS - Clause de non-responsabilité :
Ce document fait partie d'autres moyens de communication de Trespo. La clause de non-responsabilité suivante résume la totalité de la clause de non-responsabilité applicable. Les informations contenues dans le présent document ne sont fournies qu'à titre indicatif par Trespo International B.V. (« Trespo »). Trespo ne peut garantir l'exactitude ni la complétude desdites informations. L'utilisateur dans les supports de communication de Trespo (y compris, sans s'y limiter, les supports papier) et dans les échantillons des produits Trespo peuvent différer des couleurs des produits Trespo fournis. Les produits et échantillons Trespo sont fabriqués dans les limites des tolérances de couleurs indiquées et les couleurs (des lots de production) peuvent différer les uns par rapport aux autres, même si le même coloris est employé. L'angle d'observation influence également la perception des coloris. Les panneaux métallisés se caractérisent par une surface dont la couleur change selon l'angle d'observation. La stabilité spécifique et les spécifications des coloris portent uniquement sur la surface décorative des produits Trespo et non pas sur le cœur du matériau et les échantillons desdits produits. Les clients et les tiers doivent faire appel à un professionnel pour demander conseil sur le caractère approprié des produits Trespo pour les applications souhaitées et sur les lois et la réglementation en vigueur. Trespo décline toute responsabilité en cas de dommage découlant de l'usage du présent document ou s'y rapportant, sauf en cas de dol, de faute intentionnelle ou de faute lourde de la part de Trespo et/ou de ses dirigeants. Tous les droits de propriété intellectuelle et tous les autres droits relatifs au contenu du présent document (y compris les logos, textes et photographies) appartiennent à Trespo et/ou à ses concédants. © Trespo, Meteon, Athlon, TopLab, TopLab^{©2016}, TopLab^{©2018}, Virtuo, Volkern, Trespo Essentials et Mystic Metallics sont des marques déposées de Trespo.

ITALIANO - Liberatoria:
Il presente documento costituisce parte integrante di altre forme di comunicazione di Trespo. La seguente liberatoria rappresenta una sintesi della liberatoria integrale applicabile. Le informazioni fornite da Trespo International B.V. (in seguito: "Trespo") nel presente documento hanno un carattere meramente indicativo. Trespo non garantisce l'esattezza né la completezza delle informazioni. Dalle informazioni fornite non deriva alcun diritto; il loro uso avviene a rischio e sotto la responsabilità del soggetto utilizzatore. I colori rappresentati nelle comunicazioni di Trespo (fra cui si annoverano, a titolo tuttavia non esclusivo, i supporti stampati) e nei campioni dei prodotti Trespo possono differire dai colori effettivamente presenti nei prodotti originali che Trespo fornisce. I prodotti e i campioni di Trespo sono realizzati nel rispetto delle tolleranze cromatiche indicate; le tonalità cromatiche (almeno relative ai vari lotti di produzione) potrebbero differire anche a fronte dell'effettivo utilizzo dello stesso colore. Anche l'angolo visuale influisce sulla percezione dei colori. I pannelli metallizzati hanno una superficie cromatica sensibile alla prospettiva di veduta. La stabilità cromatica e le specifiche dei colori si riferiscono esclusivamente alle superfici ornamentali dei prodotti Trespo e non attingono al materiale di base e ai campioni dei prodotti Trespo. I clienti ed i terzi sono tenuti a chiedere il parere di un consulente professionale del settore in merito all'utilizzo dei prodotti Trespo (e alla loro idoneità) per tutti gli scopi previsti nonché in relazione alle leggi e ai regolamenti applicabili. Trespo declina ogni responsabilità (sia in ambito contrattuale che extracontrattuale) in caso di danni di qualsiasi natura, derivanti o correlati all'utilizzo del presente documento, tranne nel caso e nella misura in cui tale danno sia stato cagionato da dolo o colpa grave da parte di Trespo e/o dalla sua direzione. I diritti d'autore e di proprietà intellettuale nonché tutti gli altri diritti relativi ai contenuti del presente documento (ivi compresi loghi, testi e immagini) sono di esclusiva proprietà di Trespo e/o dei suoi licenziatori. © Trespo, Meteon, Athlon, TopLab, TopLab^{©2016}, TopLab^{©2018}, Virtuo, Volkern, Trespo Essentials e Mystic Metallics sono marchi registrati di Trespo.

ESPAÑOL - Cláusula de exoneración de responsabilidad:
El presente documento es parte de otro documento de Trespo. La siguiente cláusula de exoneración de responsabilidad es un resumen de la cláusula total aplicable. La información facilitada por Trespo International B.V. ("Trespo") en este documento es exclusivamente indicativa. Trespo no puede garantizar la corrección y la exactitud de esa información. La información aquí contenida y el uso de esta información no genera derechos, expectativas de derechos que puedan invocarse. El uso de esta información será por cuenta y riesgo de quien la utilice. Los colores en los medios de comunicación de Trespo (incluidos, sin limitación, los trabajos de imprenta) y en las muestras de los productos de Trespo pueden ser diferentes del color de los productos de Trespo que se suministran. Los productos y las muestras de Trespo se producen dentro de la tolerancia del color indicada y (los lotes de producción) pueden mostrar diferencias entre sí, incluso cuando se aplica el mismo color. El ángulo de visión también influye en la percepción del color (el aspecto de la superficie de color de las placas metálicas Meteon varía según su orientación). La estabilidad de color y las especificaciones de color se refieren exclusivamente a la superficie decorativa de los productos de Trespo, y no al material principal y a las muestras de los productos de Trespo. Los clientes y terceros deberán hacerse informar por un asesor profesional sobre (la idoneidad de) los productos de Trespo para todas las aplicaciones deseadas y sobre las disposiciones y normativas aplicables. Trespo no será responsable (ni contractual ni extracontractualmente) de ningún daño derivado de, o relacionado con el uso de este documento, a menos que los daños sean consecuencia de dolo o culpa grave por parte de Trespo o de su dirección. Todos los derechos de autor y los demás derechos de propiedad intelectual sobre el contenido de este documento (incluidos logotipos, textos y fotografías) pertenecen a Trespo o sus licenciantes. © Trespo, Meteon, Athlon, TopLab, TopLab^{©2016}, TopLab^{©2018}, Virtuo, Volkern, Trespo Essentials y Mystic Metallics son marcas comerciales registradas de Trespo.

中文 - 免责声明:
本文件是千思板国际公司沟通方式的一部分。该免责声明适用于所有免责声明的总结。文件中千思板国际公司（“千思板”）提供的信息仅为指示性信息。千思板不能保证信息的准确性和完整性。所提供的信息并不存在任何权利；对方应承担使用信息的风险和责任。千思板不限制千思板产品和千思板样品使用的颜色可能与提供的千思板产品颜色不同。千思板产品颜色（至少在生产批次内）的颜色可能不同，即使使用相同的颜色。金属面板的特点在于，从不同方向观察着其表面，颜色会发生变化。特别是颜色稳定性和颜色板板仅与千思板产品的表面有关，而与千思板产品的核心材料和基材有关。必须由专业顾问向客户和第三方告知千思板产品的预期应用（的适用性）以及相关法律法规。对于因使用文件引起或与文件有关的任何损害，千思板不承担（任何和全部的）责任。除该提供信息是由千思板或其管理层的故意不正当行为或重大过失造成。与文件内容（包括标识、文字和照片）有关的知识产权和其他权利属于千思板或其许可人。© Trespo, 千思板, Meteon, Athlon, TopLab, TopLab^{©2016}, TopLab^{©2018}, Virtuo, Volkern, Trespo Essentials和Mystic Metallics都是千思板的注册商标。